

Model 380-E4 Spider



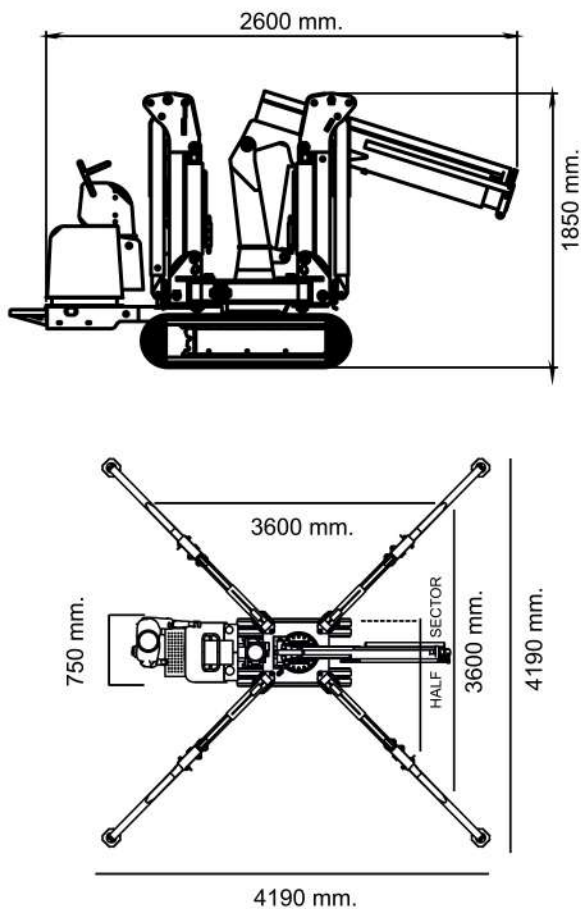
K e g i o m
l i f t i n g



*gru . crane . kran . grue . macarale .
daruk*

Dimensioni Generali - General Dimensions - Dimensions G n rales

Dimensiuni generale -  ltal nos m retek



Pu  salire e scendere dal veicolo di trasporto con gli stabilizzatori
Self-loading/unloading on the truck with outriggers.

Kann steigen und erhalten vom Transportfahrzeug mit den Stabilisatoren des Kran
Autoinc rcare/desc rcare pe camion cu stabilizoare
 n ll  rakod s/kirakod s a teheraut ra kit maszt kkal



Tabella portata (stabilizzatori tutti estesi)
Lifting Capacity Chart (outriggers fully extended)

Tabel de capacitate de ridicare (stabilizoare complet extinse)
Emel kapacit si t bl zat (teljesen kih zott kit maszt k)

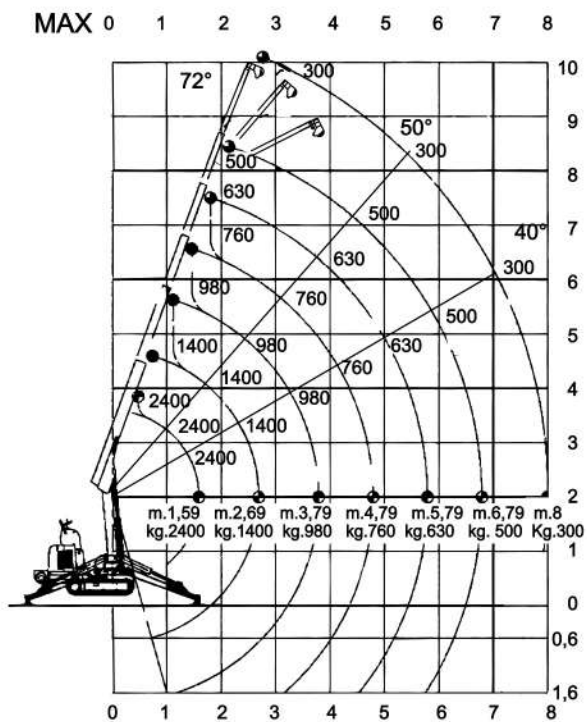
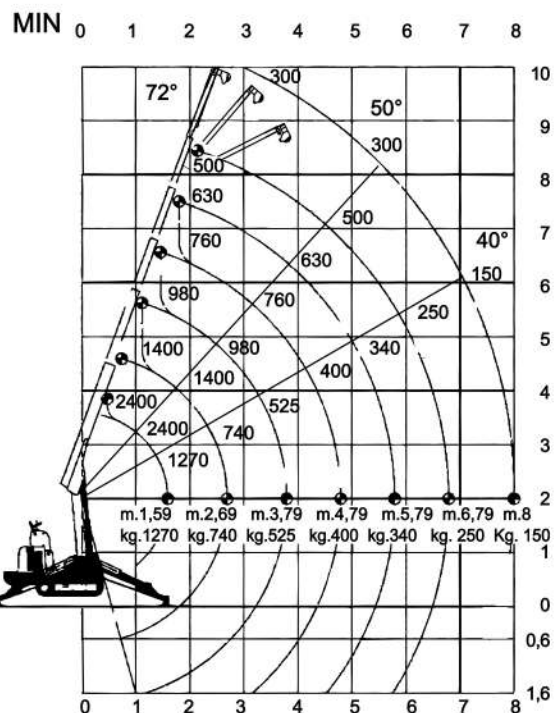


Tabella portata (stabilizzatori min. estesi)






Lifting Capacity Chart (outriggers min. extended)

Diagram  de capacitate de ridicare (stabilizoare minim extinse)

Emel kapacit si t bl zat (kit maszt k minim lisan kih zva)




**DATI TECNICI TECHNICALS SHEETS TECHNISCHE DATEN CARACTERISTIQUES TECHNIQUES DATOS TECNICOS
FIȘE TEHNICE MŪSZAKI LAPOK**

					
Motore benzina avviamento elettr.	Motor petrol electric starting	Benzinmotor Elektrostarter	Motor benzina cu pornire electrica	Benzinmotor elektromos indítással	Honda GX390 13HP a 3600 rpm
Capacità serbatoio	Tank capacity	Trankkapazität	Capacitate rezervor	Tartály kapacitása	6 l.
Trazione idrostatica a 2 velocità	Drive system hydrostatics to 2 speeds	Hydrostatischer Antrieb mit 2 Geschwindigkeiten	Hidrostatica sistemului de conducere cu 2 viteze	Meghajtórendszer hidrosztatikája 2 sebességgel	Km/h 2,6 4,0
Angolo di rampa	Ramp angle	Steigungswinkel	Unghiul rampei	Rámpaszög	20° (36.4%)
Cingoli in gomma	Tracks in rubber	Raupenketten aus Gummi	Senile de cauciuc	Gumi pályák	1222 x 180 x 20 mm.
Portata max	Max lifting	Max. Tragfähigkeit	Capacitate de ridicare	Teherbírás	2400 Kg.
Sbraccio massimo	Max working radius	Max.Ausladung	Raza maxima	Maximális sugár	8 m.
Altezza massima	Max.working height	Tragfähigkeit bei max.Ausladung	Inaltime de lucru maxima	Maximális munkamagasság	10 m.
Fune	Winch rope	Seil	Franghie	Kötél	30/42 m. ø 8 mm.
Rotazione	Rotation	Umdrehung	Rotatie	Forgás	360°
Stabilizzatori	Outriggers	Abstützung	Stabilizatori	Sztabilizálók	Hydraulic multi position
Pressione al suolo	Max track loading	Bodendruck	Presiunea la sol	Talajnyomás	0,34 Kg/cm ²
Comandi elettrico proporzionali	Electricals proportionals control	Elektrische proportionale Steuerung	Comenzi electrice proportionale	Elektromos arányos vezérlés	
Limitatore di momento	Automatic limiting device	Automatische Grenzlastregelung	Limitator de moment	Sebességhatároló	Elektronico - Electronic Elektronisch - Électronique Electrónico
Pressione max	Max pressure	Max Betriebsdruck	Presiune maxima	Maximális nyomás	190 bar
Dimensioni Gru	Dimensions crane	Abmessungen Kran	Dimensiuni macara	Daru méretek	2600 x 750 x 1850 mm.
Peso	Weight	Gewicht	Greutate	Súly	1380 Kg.

OPTIONALS



Verricello
Winch
Treuil
Troliu
Csőrő



Elettropompa 115-220-380 V
Electric pump 115-220-380 V
Pompe électrique 115-220-380 V
Pompă electrică 115-220-380 V
Elektromos szivattyú 115-220-380 V




Radiocomando
Radio remote control
Radiocommande
Telecomandă radio
Rádiós távirányító



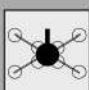
Cestello
Basket
Nacelle
Cos
Kosár



Prolunghe meccaniche
Manuels extensions
Rallonges manuelles
Extensie manuală
Kézi kiterjesztés



Allargamento idraulico cingoli mm. 750/1050
Widening hydraulic tracks mm. 750/1050
Élargissement hydraulique des chenilles mm. 750/1050
Lărgirea pistolor hidraulice
Hidraulikus csatornák kiszélesítése



Sollevatore a ventosa portata max +0 400 - 1200 Kg
Vacuum lifter max lifting +0 400 - 1200 Kg
élevateur à vide carga maxima +0 400 - 1200 Kg
Ridicarea maximă a dispozitivului de ridicare cu vid +0 400 - 1200 Kg
A vákuumos emelő maximális emelése +0 400 - 1200 Kg



Dealer

