

gru - crane - kran - grue - grúa
macara - daru



Tabella portata (stabilizzatori tutti estesi) - Lifting Capacity Chart (outriggers fully extended)

Diagramă de capacitate de ridicare (stabilizatoare complet extinse)
Emelőképességi táblázat (teljesen kihúzott kitámasztók)

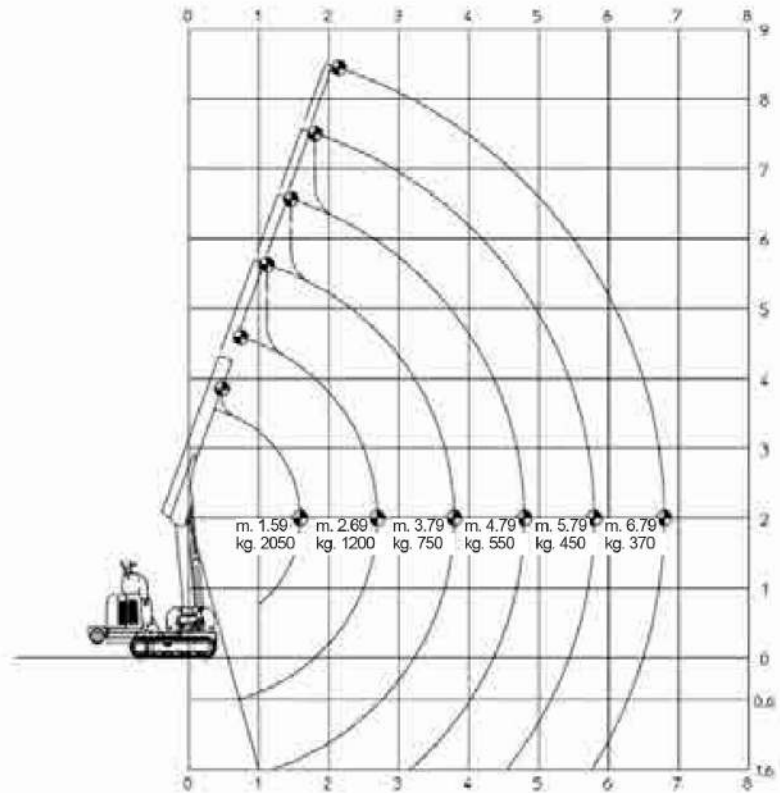
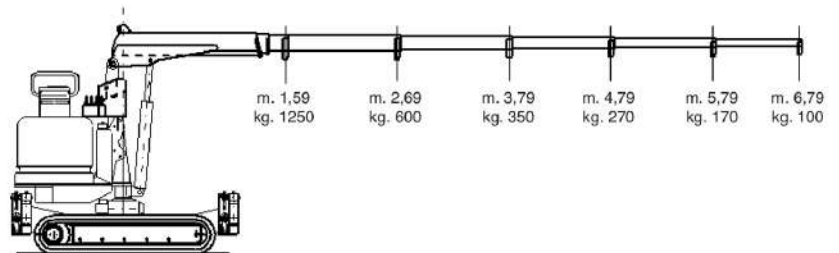
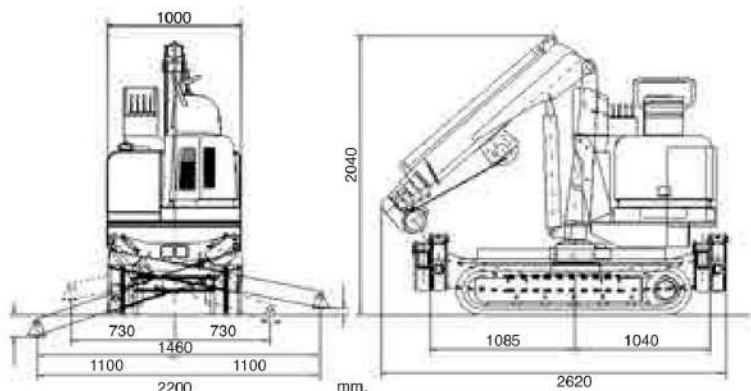







Tabella Portate su Orpodi - Lifting Capacity Chart on Crawlers - Graficul
capacității de ridicare pe șenile - A lánctalpasok
emelőképességi táblázata



Dimensi Generali - General Dimension - Dimensions Générales
Dimensiunea generală - Általános méretek

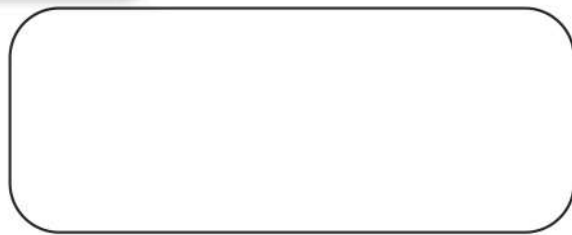


DATI TECNICI – TECHNICAL SHEET – FIȘĂ TEHNICĂ - MŪSZAKI ADATLAP

					
Motore diesel avviamento elettr.	Motor diesel electric starting	Deselmotor Elektrostarter	Motor diesel cu pornire electrică	Elektromos indítású dízelmotor	Perkins 402.05 14HPa 3500g/ 1° 2 cylinders cooled to water
Capacità serbatoio	Tank capacity	Tankkapazität	Capacitatea rezervorului	Tartály kapacitás	10 l.
Trazione idrostatica a 2 velocità	Drive system hydrostatics to 2 speeds	Hydrostatischer Antrieb mit 2 Geschwindigkeiten	Sistem de acționare hidrostatic cu 2 viteze	2 sebességű hidrosztatikus hajtásrendszer	Km/h 2,0 – 3,9
Angolo di rampa	Angle or ramp	Steigungswinkel	Unghi sau rampă	Szög vagy rámpa	25°
Angoli in gomma	Tracks in rubber	Raupenkettens aus Gummi	Șenile din cauciuc	Nyomvonalak gumiból	1240 x 180 x 20 mm
Portata max	Max lifting	Max. Tragfähigkeit	Ridicare maximă	Maximális emelőerő	2050 Kg.
Sbraccio massimo	Max working radius	Max. Ausladung	Raza maximă de lucru	Maximális munkasugár	6,79 m
Altezza massima	Max. working height	Tragfähigkeit bei max. Ausladung	Înălțimea maximă de lucru	Maximális munkamagasság	8,50 m
Fune	Winch rope	Sail	Cablul de troliu	Csőrőkötél	30 m ø 8 mm
Rotazione	Rotation	Umdrehung	Rotație	Forgatás	360°
Stabilizzatori	Outriggers	Abstützung	Stabilizoare	Kitámasztószerkezetek	Hydraulic multi position
Pressione al suolo	Max track loading	Bodendruck	Sarcina maximă a șinei	Maximális pályaterhelés	0,54 Kg/ cm²
Comandi elettrico proporzionali	Controls electrical proporsional	Elektrische proportionale Steuerung	Comenzi electrice proporționale	Elektromos arányos vezérlés	
Limitatore di momento	Automatic limiting device	Automatische Grenzlastregelung	Dispozitiv de limitare automată	Automatikus korlátozó eszköz	Elektronico – Electronic – Elektronisch - Électronique - Eletrónico
Pressione max	Max pressure	Max Betriebsdruck	Presiune maximă	Maximális nyomás	190 bar
Dimensioni Gru	Dimensions crane	Abmessungen Kran	Dimensiuni macara	Méreték daru	2620 x 1000 x 2040 mm
Peso	Weight	Gewicht	Greutate	Súly	2700 Kg.

OPTIONAL

	Véneclo Winch Teil Troliu Csőrő		Electric pump 115-220-380 V Pompă electrică 115-220-380 V Elektromos szivattyú 115-200-380 V		Radio remote control Rádóremotócentrul Telecomandă radio Rádiós távirányító		Tălmănterment marin de legu Maine treatment of the crane Tălmănterment marin de la gura A daru tengeri kezelése
	Extensie manuală Manual extensions Prolongamente manuale		Alargamento idraulico angoli mm 1000/ 1320 Widening hydraulic tracks mm 1000/ 1320 Élargissement hydraulique des chenilles mm 1000/ 1320 Lărgirea pistelor hidraulice 1000/1320 Hidraulikus pályák kiszélesítése 1000/1320		Telecomandă Căblu remote control Telecomandă Tălmăntermentă Tălmăntermentă		Căștiel Basket Năștiel Căștiel Căștiel



K e g i o m
l i f t i n g